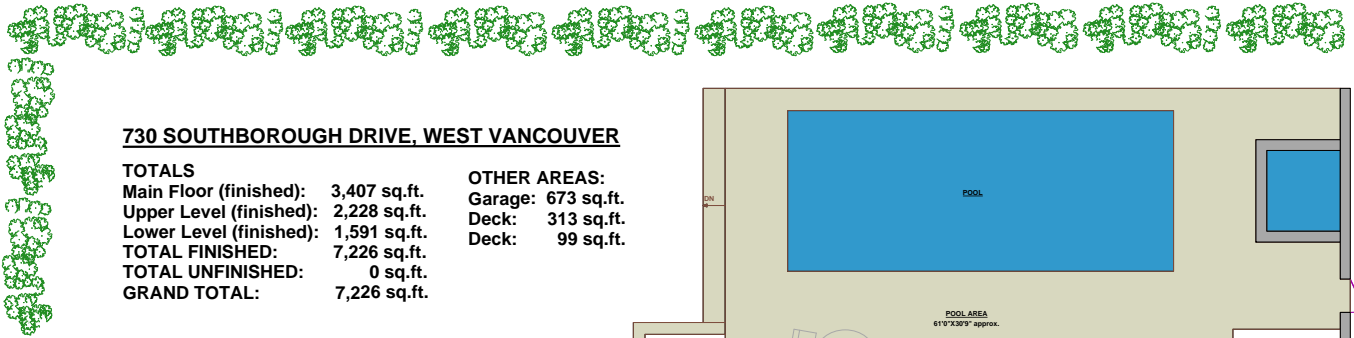




REAL ESTATE ADVISORS

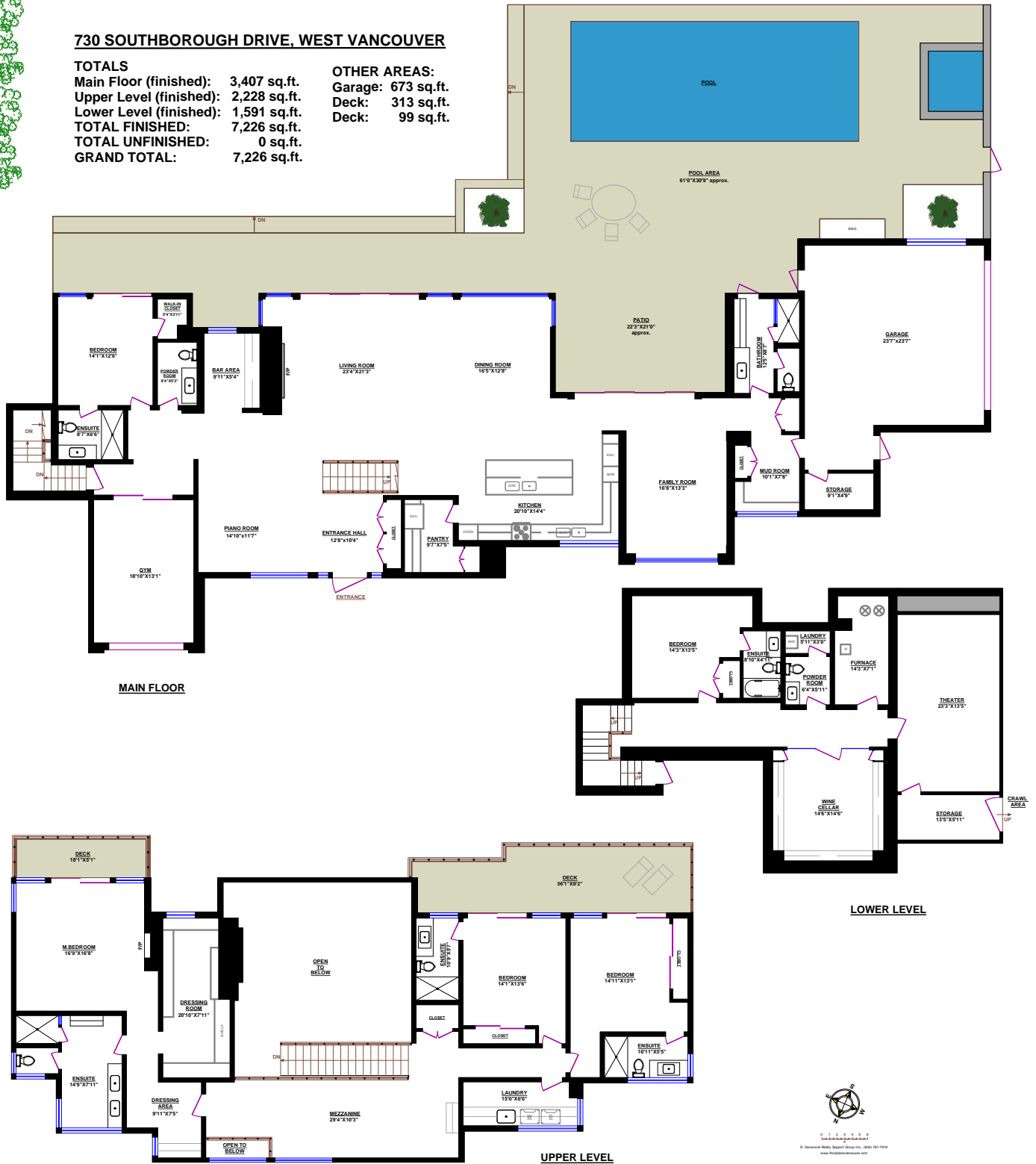
are you on THE V LIST



**730 SOUTHBOROUGH DRIVE, WEST VANCOUVER**

**TOTALS**

Main Floor (finished):	3,407 sq.ft.	OTHER AREAS:	
Upper Level (finished):	2,228 sq.ft.	Garage: 673 sq.ft.	
Lower Level (finished):	1,591 sq.ft.	Deck: 313 sq.ft.	
<b>TOTAL FINISHED:</b>	<b>7,226 sq.ft.</b>	Deck: 99 sq.ft.	
<b>TOTAL UNFINISHED:</b>	<b>0 sq.ft.</b>		
<b>GRAND TOTAL:</b>	<b>7,226 sq.ft.</b>		





Vancouver Realty Support Group Inc.

tel: 604-761-7919

email@floorplansvancouver.com

www.floorplansvancouver.com

## 730 Southborough Drive, West Vancouver

MAIN FLOOR	
Living Room	23'4"x21'3"
Bar Area	9'11"x7'4"
Family Room	16'8"x13'3"
Piano Room	14'10"x11'7"
Dining Room	16'5"x12'8"
Kitchen	20'10"x14'4"
Pantry	9'7"x7'5"
Bedroom	14'1"x12'6"
Ensuite	8'7"x6'6"
Walk-in Closet	5'4"x3'11"
Entrance Hall	12'8"x10'4"
Gym	18'10"x13'1"
Mud Room	10'1"x7'8"
Bathroom	12'5"x8'7"
Powder Room	8'4"x5'3"

UPPER LEVEL	
M.Bedroom	16'9"x16'8"
Ensuite	14'9"x7'11"
Toilet	5'7"x3'5"
Shower	6'0"x3'8"
Dressing Room	20'10"x7'11"
Dressing Area	9'11"x7'5"
Bedroom	14'11"x13'1"
Ensuite	10'11"x5'5"
Bedroom	14'1"x13'6"
Ensuite	10'9"x5'7"
Mezzanine	29'4"x10'3"
Laundry	15'0"x6'0"

LOWER LEVEL	
Theater	23'3"x13'5"
Wine Cellar	14'6"x14'6"
Bedroom	14'3"x13'5"
Ensuite	8'10"x4'11"
Powder Room	6'4"x5'11"
Laundry	5'11"x3'0"
Furnace	14'3"x7'1"
Storage	13'5"x5'11"
Storage	9'1"x4'9"

TOTALS	
<b>Main Floor (finished):</b>	<b>3,407 sq.ft.</b>
<b>Upper Level (finished):</b>	<b>2,228 sq.ft.</b>
<b>Lower Level (finished):</b>	<b>1,591 sq.ft.</b>
<b>TOTAL FINISHED:</b>	<b>7,226 sq.ft.</b>
<b>TOTAL UNFINISHED:</b>	<b>0 sq.ft.</b>
<b>GRAND TOTAL:</b>	<b>7,226 sq.ft.</b>

OTHER AREAS:			
<b>Garage:</b>	<b>673 sq.ft.</b>	23'7"x23'7"	
<b>Deck:</b>	<b>313 sq.ft.</b>	36'1"x9'2"	
<b>Deck:</b>	<b>99 sq.ft.</b>	18'1"x5'1"	
<b>Patio:</b>		22'3"x21'0"	approx.
<b>Pool Area:</b>		61'0"x30'9"	approx.

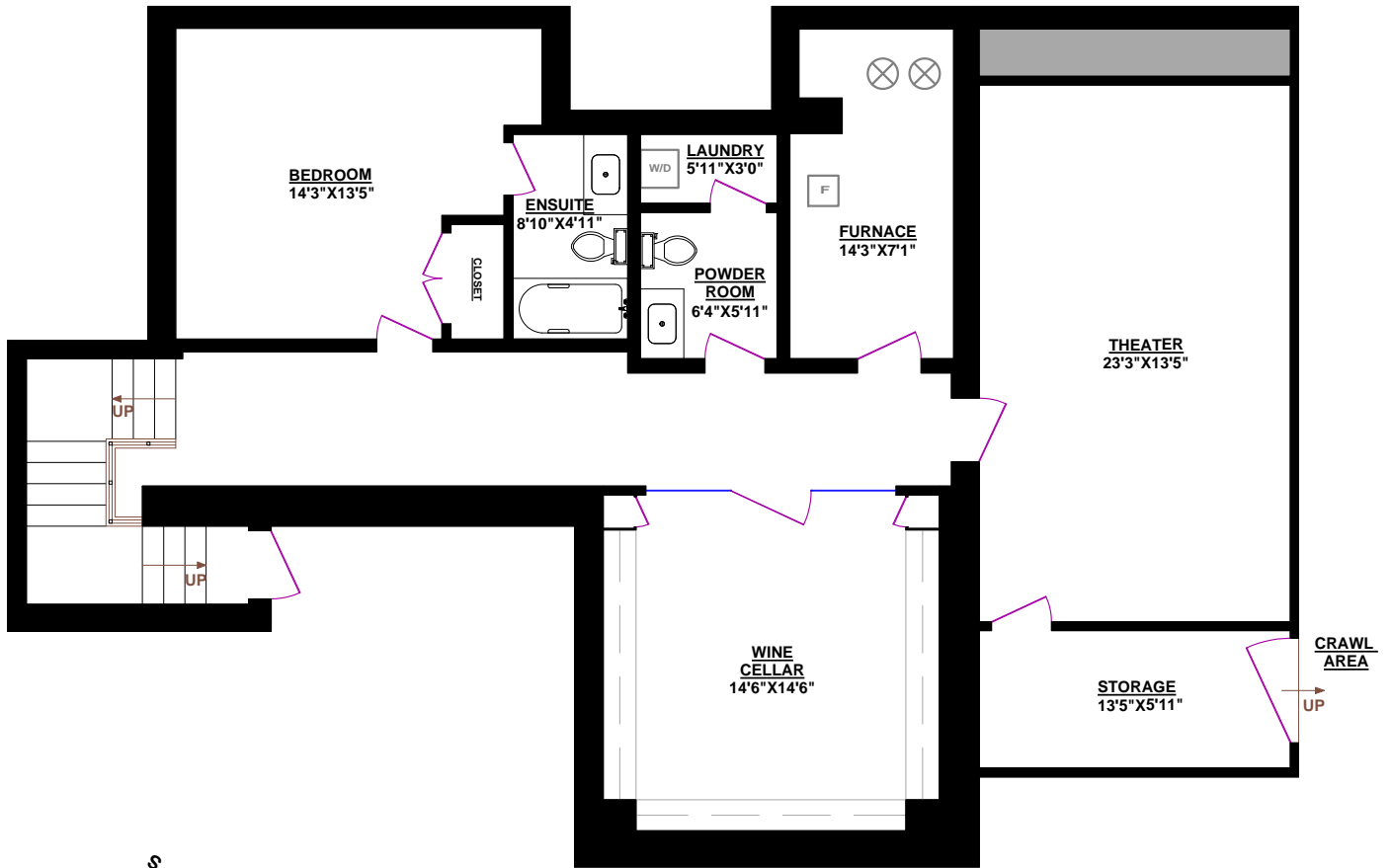
**730 SOUTHBOROUGH DRIVE, WEST VANCOUVER**

**TOTALS**

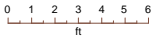
Main Floor (finished): 3,407 sq.ft.  
 Upper Level (finished): 2,228 sq.ft.  
 Lower Level (finished): 1,591 sq.ft.  
**TOTAL FINISHED: 7,226 sq.ft.**  
**TOTAL UNFINISHED: 0 sq.ft.**  
**GRAND TOTAL: 7,226 sq.ft.**

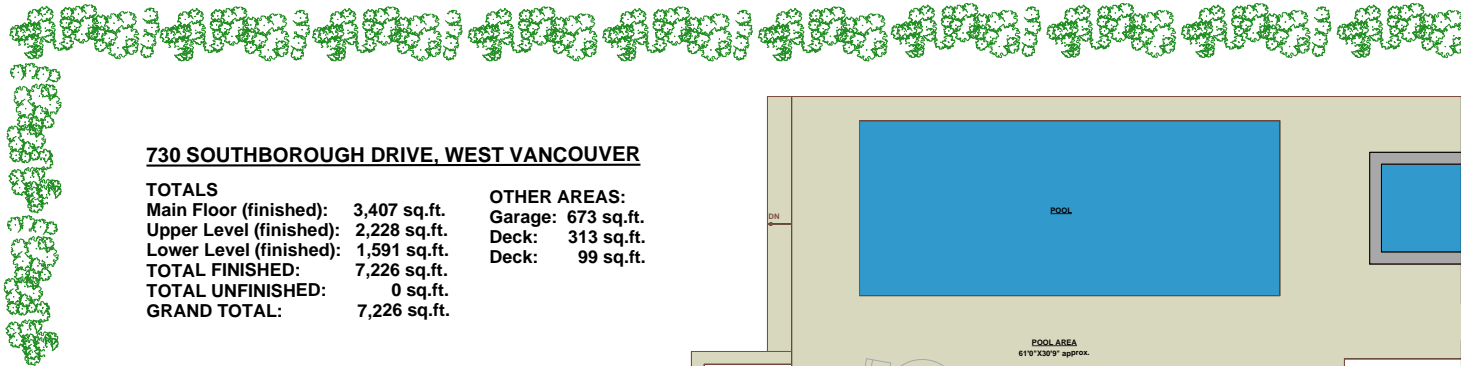
**OTHER AREAS:**

Garage: 673 sq.ft.  
 Deck: 313 sq.ft.  
 Deck: 99 sq.ft.



**LOWER LEVEL**

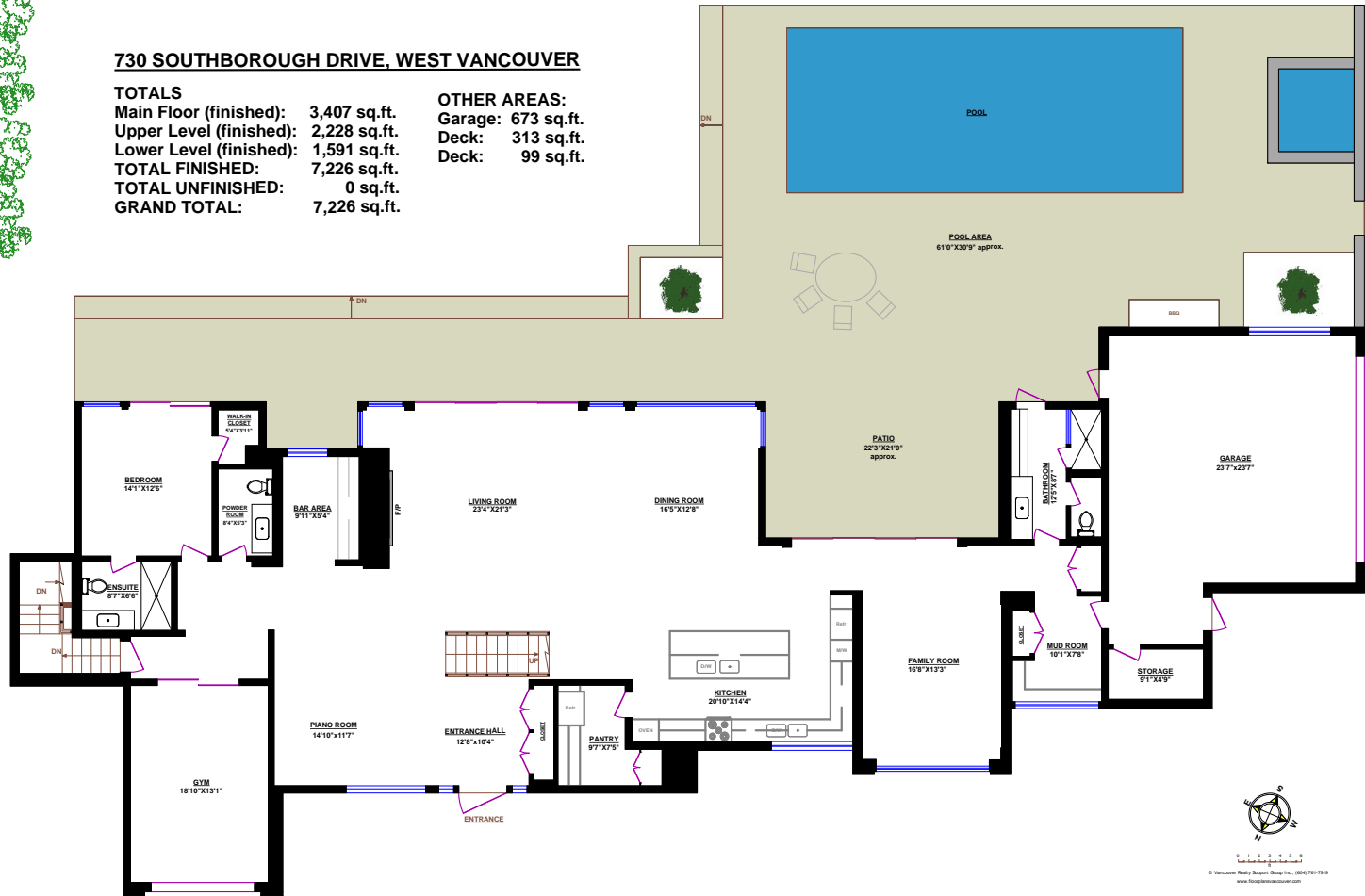




**730 SOUTHBOROUGH DRIVE, WEST VANCOUVER**

**TOTALS**  
 Main Floor (finished): 3,407 sq.ft.  
 Upper Level (finished): 2,228 sq.ft.  
 Lower Level (finished): 1,591 sq.ft.  
**TOTAL FINISHED: 7,226 sq.ft.**  
**TOTAL UNFINISHED: 0 sq.ft.**  
**GRAND TOTAL: 7,226 sq.ft.**

**OTHER AREAS:**  
 Garage: 673 sq.ft.  
 Deck: 313 sq.ft.  
 Deck: 99 sq.ft.



**MAIN FLOOR**

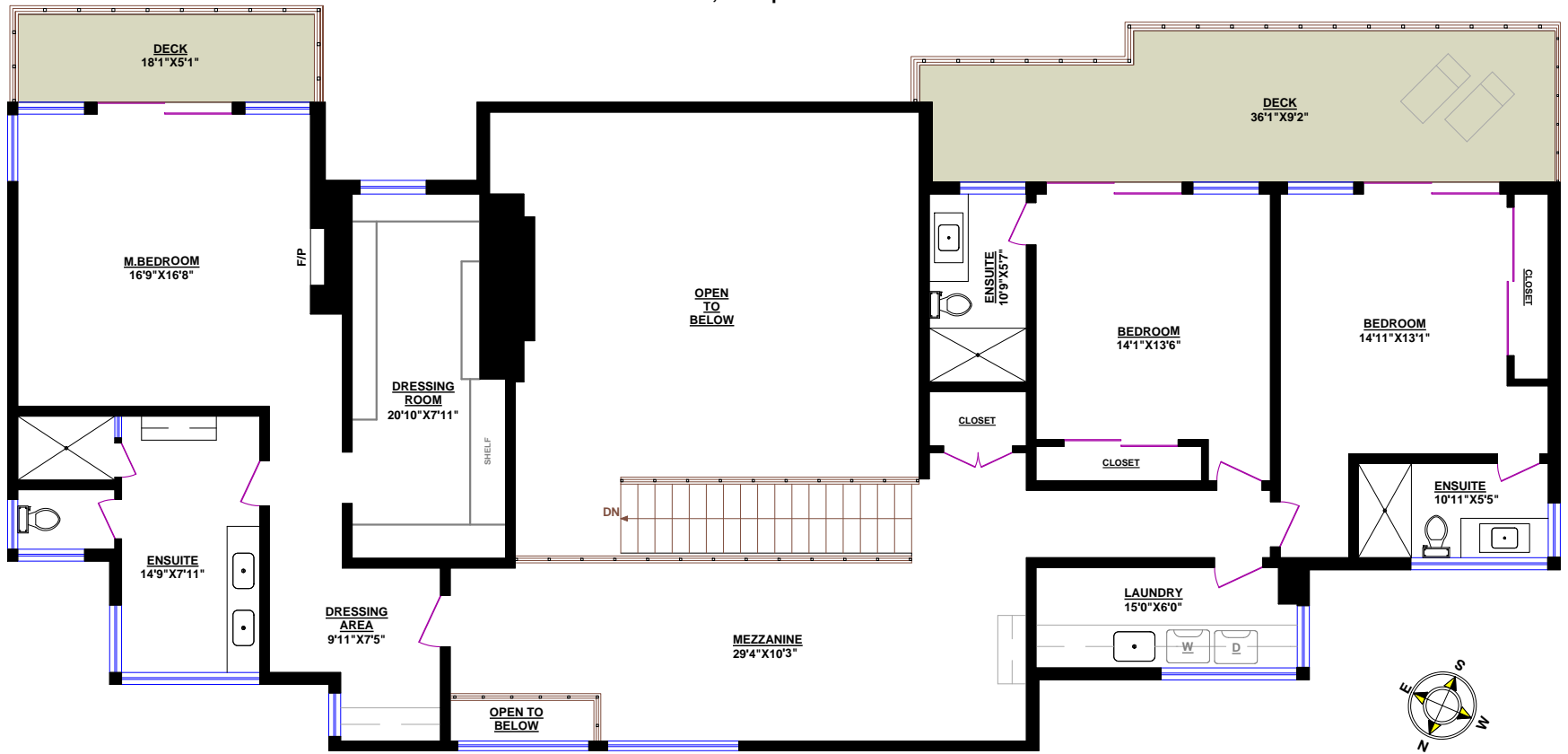




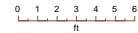
are you on **THE V LIST**

**730 SOUTHBOROUGH DRIVE, WEST VANCOUVER**

<b>TOTALS</b>		<b>OTHER AREAS:</b>
Main Floor (finished):	3,407 sq.ft.	Garage: 673 sq.ft.
Upper Level (finished):	2,228 sq.ft.	Deck: 313 sq.ft.
Lower Level (finished):	1,591 sq.ft.	Deck: 99 sq.ft.
<b>TOTAL FINISHED:</b>	<b>7,226 sq.ft.</b>	
<b>TOTAL UNFINISHED:</b>	<b>0 sq.ft.</b>	
<b>GRAND TOTAL:</b>	<b>7,226 sq.ft.</b>	



**UPPER LEVEL**



© Vancouver Realty Support Group Inc., (604) 761-7919  
www.floorplansvancouver.com