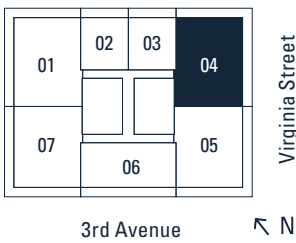
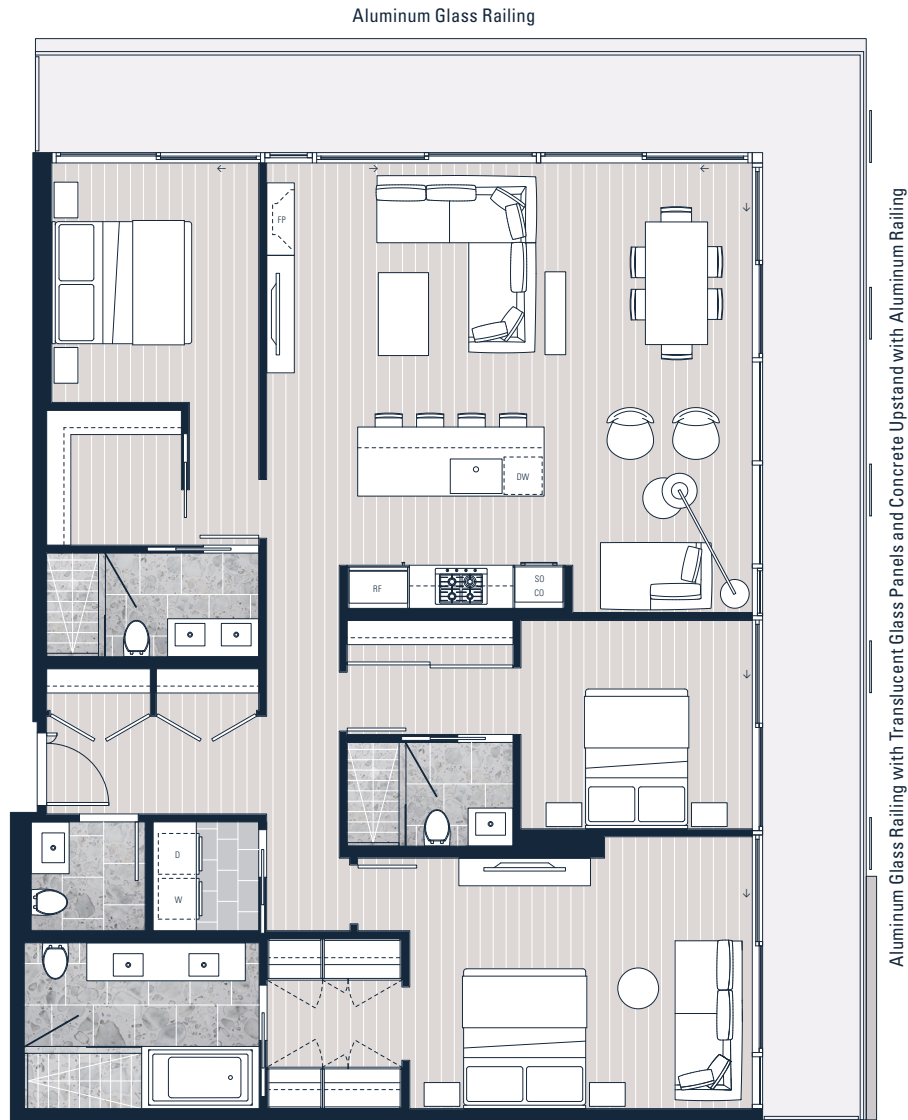


Interior 1,662 sf
Exterior 433 sf



Floors 43 – 44

* PLEASE NOTE BALCONY CONDITIONS MAY VARY BY FLOOR LEVEL, PLEASE SPEAK TO A FIRST LIGHT SALES REPRESENTATIVE FOR FURTHER DETAILS.

INTERIOR SQUARE FOOTAGE IS COMBINED WITH BALCONY SQUARE FOOTAGE AND INCLUDED IN THE TOTAL ADVERTISED SQUARE FOOTAGE OF THE HOME. SQUARE FOOTAGE IS APPROXIMATE ONLY, MAY VARY FROM THE ACTUAL HOME AS CONSTRUCTED. EXTERIOR WALLS, GLAZING, BALCONY FASCIA AND GUARDRAIL PATTERNING ARE APPROXIMATE AND VARY DEPENDING ON THE HOME. DIMENSIONS, SIZES, SPECIFICATIONS, LAYOUTS AND MATERIALS ARE APPROXIMATE ONLY, NEED NOT BE BUILT AS DEPICTED, AND SUBJECT TO CHANGE WITHOUT NOTICE. DEPICTIONS OF FURNITURE AND OTHER PERSONAL PROPERTY ARE FOR ILLUSTRATION PURPOSES ONLY AND WILL NOT BE INCLUDED WITH A HOME. PLEASE ASK SALES REPRESENTATIVE FOR DETAILS. E. &O.E.



westbank²⁵